



# MaxVision<sup>®</sup> MaxPac<sup>®</sup>

RUGGED PORTABLE COMPUTERS LLC 8261XL

## 24.1" (1920 x 1200) Single, Dual, Triple or Six Screen, Dual Xeon, Rugged Portable PC Workstation



MaxPac8261XL3



MaxPac8261XL6



MaxPac8261XL1



MaxPac8261XL2V



MaxPac8261XL2

### The ultimate workstation for C4ISR imagery, mapping, video, exploitation and analysis

#### Key features:

- Dual Xeon E5-2600v3 processors up to 36 cores/72 threads using Supermicro X10DAC motherboard.
- 1TB of DDR4 main memory maximum
- Choice of the most powerful graphics supporting a choice of one to six 24" (1920 x 1200) Full HD displays, with optional 10 touch and remote projector repeater ports.
- Six high performance PCI-E full length card slots (three PCIe 3.0 x16, two PCIe 3.0 x8 slots, one PCIe 2.0x4in8)
- Removable data disk magazine with up to 24TB of RAID storage and separate removable system disk magazine supporting dual, mirrored SSD drives
- Full Global Power support from 90VAC to 264VAC
- Optional integrated power backup UPS and support for external 28VDC power
- Full dust filtration and guaranteed operation over 0C to 50C
- MIL STD 810G Transit case
- Single removable rear panel with captive fasteners for quick service access

MaxPac Class	MaxPac 8261XL				
Model	8261XL1	8261XL2	8261XL3	8261XL6	8261XL2V
Displays	Single 24.1"	Dual 24.1"	Triple 24.1"	Six 24.1"	Dual 24.1" O/U
Display Resolution	1920 x 1200				
Display Brightness	250mcd/m <sup>2</sup>				
HDMI Proj. Port Option	yes	yes	yes	yes	
Graphics Card	nVidia GeForce GTX family or nVidia Quadro K2000D, K2200, K4200, K5200, K6000				
Motherboard Processors	SuperMicro X10DAC Dual E5-2600v3 Family				
Memory	Total Slots : 16 (4-channel per CPU, 8 DIMM per CPU) Capacity : Maximum up to 512GB LRDIMM. Memory Type :DDR4 2133 /1866*/1600/1333 RDIMM*, DDR4 2133 /1866*/1600/1333 LRDIMM*DDR4 2133 /1866*/1600/1333 NVDIMM*.Memory Size :32GB, 16GB, 8GB,4GB RDIMM 64GB, 32GB LRDIMM				
TPM option	yes				
Ethernet	Dual Port Gigabit Ethernet, Intel i350, 10BASE-T, 100BASE-TX, 1000BASE-T, RJ45 connector std + Dual Port 10GbE Optional PCIe card + Dual Port 40GbE SPF optional PCIe card				
USB	4 USB 3.0 (2 more internal header) 2 USB 2.0 (2 more internal header)				
System Disk Configuration	2.5" removable magazine supporting either single 15mm thick enterprise SATA or SAS drive or dual 9.5mm thick SATA SSD drives. Capacity per drive up to 1.6TB				
System Disk types	Single or dual SSD (RAID 0 or 1) 128GB to 1.6TB. FIPS 140-2 optional using Seagate 800GB SSD or 900GB SAS HDD				
Data Disk Configuration	Four 3.5" removable drive magazine supporting SATA/SAS/SSD drives including 2.5" drives with optional adapter, 4x6TB=24TB maximum				
Data disk types	Up to four 2TB,4TB or 6TB 7200rpm Enterprise Class Drives SATA or SAS standard. SAS, SSD with or without FIPS 140-2 is available upon request. Alternatively up to 8 x 2.5" SSD up to 1.6TB per drive. 800GB FIPS 140-2 SSD available				
Standard Software RAID	RAID 0, 1, or 10 standard, (H/W RAID required for RAID 5)				
H/W Data RAID Card	LSI00202 MegaRAID SAS 9271-8i, or 9271-4i with Safestore and battery backup (supports FIPS 140-2)				
Optical (slim slot)	Std DVD Burner; Optional Bluray/DVD Burner:				
Option Slots	3x PCI-E 3.0 x16, 2x PCI-E 3.0 x8, 1x PCI-E 3.0 x4 (in x8) Both processors must be loaded to access all slots; Full Length Card support				
Optional I/O	Additional I/O on headers can be brought out through custom I/O plates, 2 USB2.0, 2 USB3.0. add-in PCIe cards to support 3x Firewire 800 (powered); add-in PCIe to support 2 x eSATA; add-in PCIe CARD to support Thunderbolt 2. Please check to see if there are adequate slots available for add-in options.				
Audio	RealTek ALC889 7.1 High Definition Audio with S/PDIF header, integrated stereo speakers				
UPS Option	Complete internal Uninterruptable Power Source 80+ Watt Hour Battery for backup of 5-10 minutes. Also supports 28VDC input power, add 6 lbs				
Keyboard/Mouse	104 key keyboard (USB); Logitech M110 mouse (USB). Optional 104 keyboard with CAC/Smart Card Reader				
Power Supply	860watt full global power 90-264VAC with quick disconnect for service				
Tripod/Keyboard option	optional				
Software: OS	Windows 7 Pro, Windows 8.1 Pro, Windows 2012 Server, Redhat Enterprise Linux standard, Redhat Enterprise Linux Server, CENT OS				
Dimension Setup	22.3"W x 16.1"H x 8.5"D	44"W x 16.8"H x 8.5"D	65.4"W x 16.8"H x 9.7"D	65.4"W x 31.8"H x 9.7"D	22.5"W x 30.9"H x 9.7"D
Weight	47.5 lbs	56 lbs	64 lbs	95 lbs	58 lbs
Transit Case/Size	Pelican iM-3075 with custom foam inserts and Poron vibration isolation system. Outside Dim. 33.30" x 24.40" x 19.30". Six display model uses an additional iM290 case for the upper detachable display array.				
Loaded Weight	98lbs	108lbs	118lbs	118 + 60lbs	108lbs
Transit Case Environmental	Mil Std 810G, 506.5 P I(Rain), 509.5(Salt/Fog), 510.5(Sand/Dust),514.6C-II(Vibration),516.6-VI(drop), -33C to 70C non operational				
Operational Environmental	Mil std 810G, 501.5 A2 (Basic HOT) 0-50C Operational				
Regulatory	FCC Class A, CE				
Network Switch Option	16 Port GbE or 16 Port 100baseT with POE, Optional module attaches to rear service				

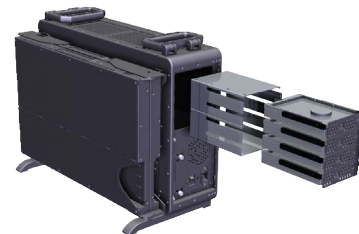
Roller Transit Case



Optional Tripod Stand and Keyboard Tray for Free Standing Operation



Removable Drives Exploded and dual display closed



While Rugged Portable Computers LLC uses reasonable effort to ensure that this information is accurate and up-to-date, the information may contain factual or typographical errors. Rugged Portable Computers LLC makes no warranties or representation as to the accuracy of such information. The information and products may be changed at any time without prior notification or obligation. Rugged Portable Computers LLC © Copyright 2015.